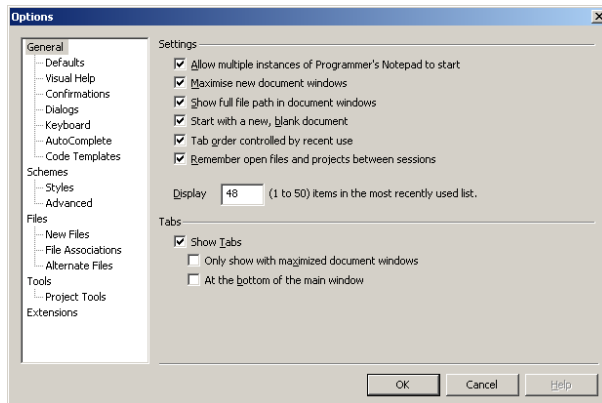


Programmer's Notepad

Tools.Options

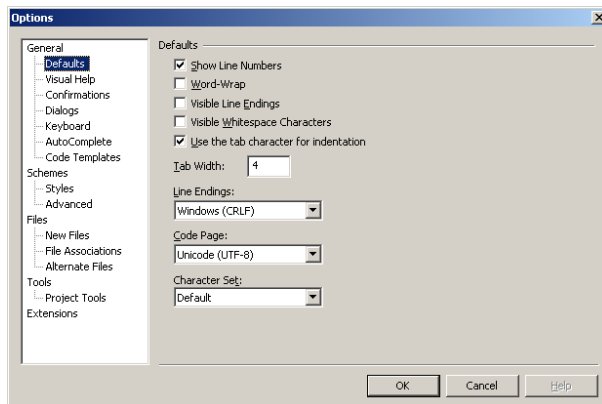
General



- Allow multiple instances of Programmer's Notepad to start
- Maximize new document windows
- Show full file path in document windows
- Start with a new, blank document
- Tab order controlled by recent use
- Remember open files and projects between sessions

Display [48] items in the most recently used list

Tools.Defaults



- Show Line Numbers
- Use tab character for indentation

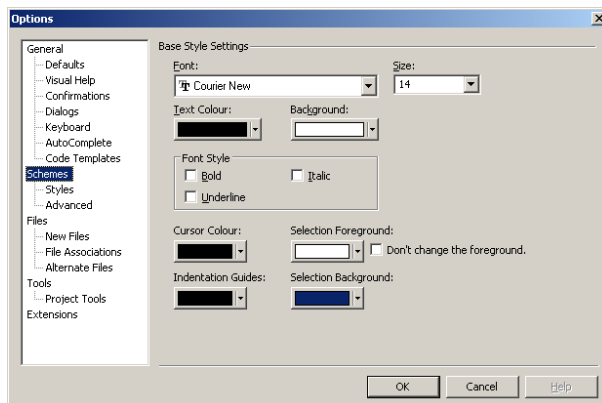
Tab Width: [4]

Line Endings: [Windows (CRLF)]

Code Page: [Unicode (UTF-8)]

Character Set: [Default]

Tools.Schemes



Font: [Courier New]

Size: [14]